



ASH 2023

NEXT-GEN AI INSIGHTS

Rapid Insights: Acute Myeloid Leukemia

Powered By
 KOGNITIC

ASH 2023 will feature the latest updates and advancements within the hematology space. At Kognitic, we leveraged our AI algorithm to analyze all of the abstracts for this year's conference that include an interventional trial within Malignant Hematology. In total, we analyzed over 800 abstracts, spanning over 700 clinical trials. We found that Acute Myeloid Leukemia (AML) was the most frequent indication with 174 abstracts. Here we present a focused look into the AML space being presented at ASH 2023.

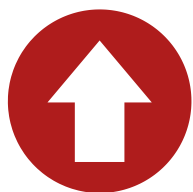
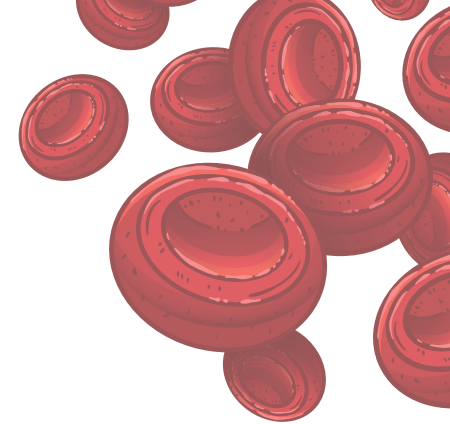
(Data and figures do not include late-breaking abstracts)

Explore the ASH 2023 dashboard at
conferences.kognitic.com

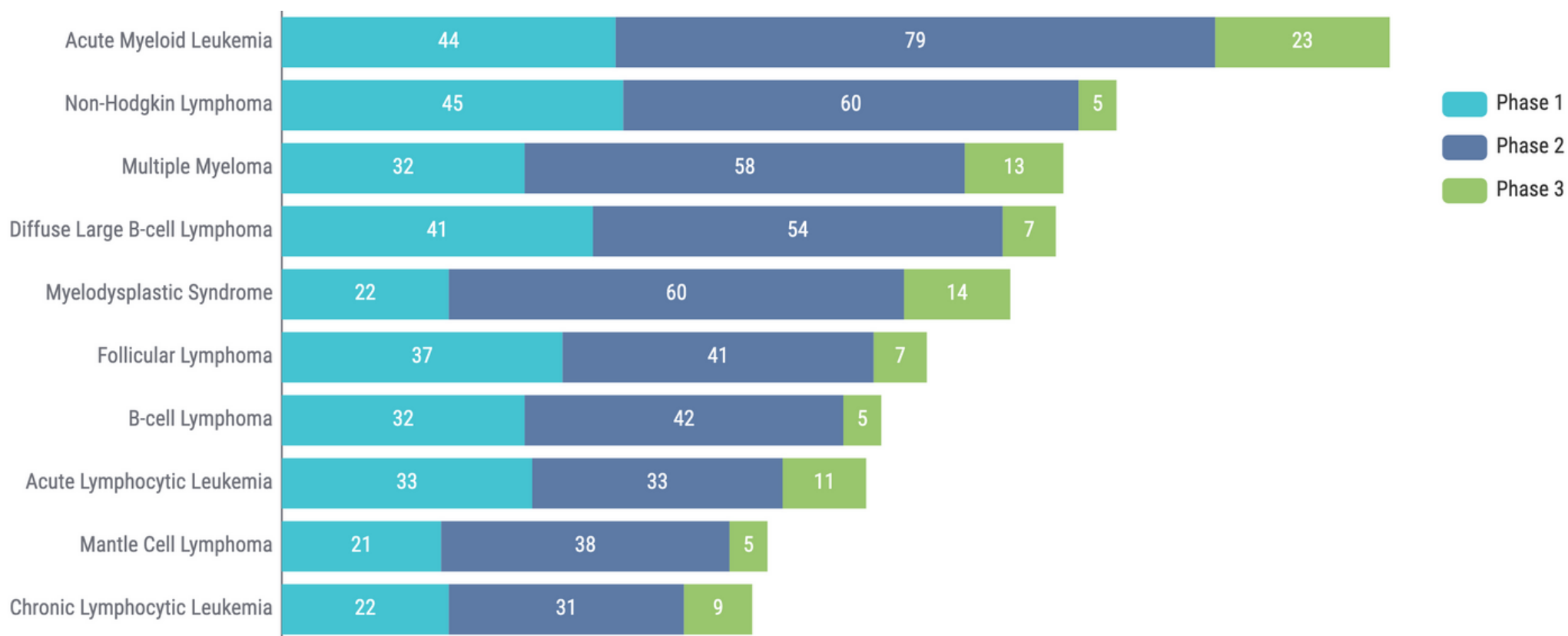


KOGNITIC

Rapid Insights: Acute Myeloid Leukemia

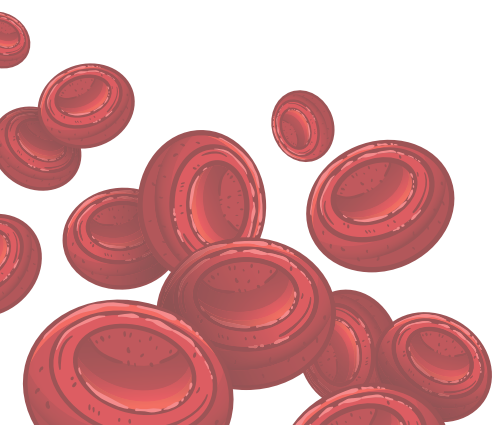


**AML leads the way at ASH 2023:
174 Abstracts, 146 trials**

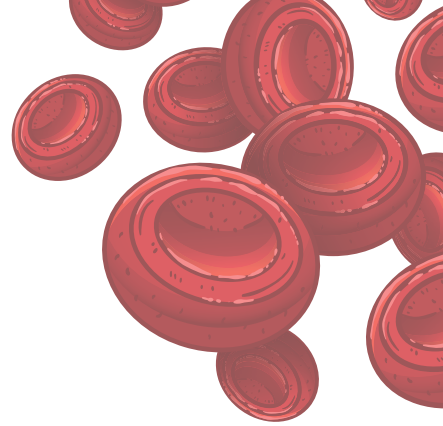


ASH 2023: Trials by Indication / Phase

Source: Kognitic



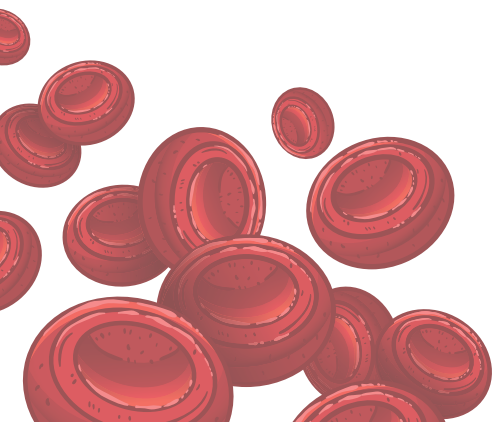
Rapid Insights: Acute Myeloid Leukemia



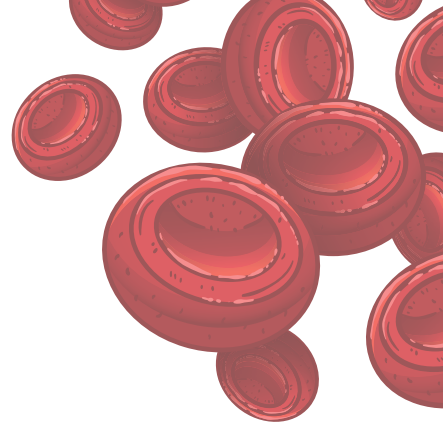
Globally, ~475,000 new cases of Leukemia are diagnosed each year. In the United States, AML accounts for ~20,000 new cancer cases each year (~1% of all new cancer cases).



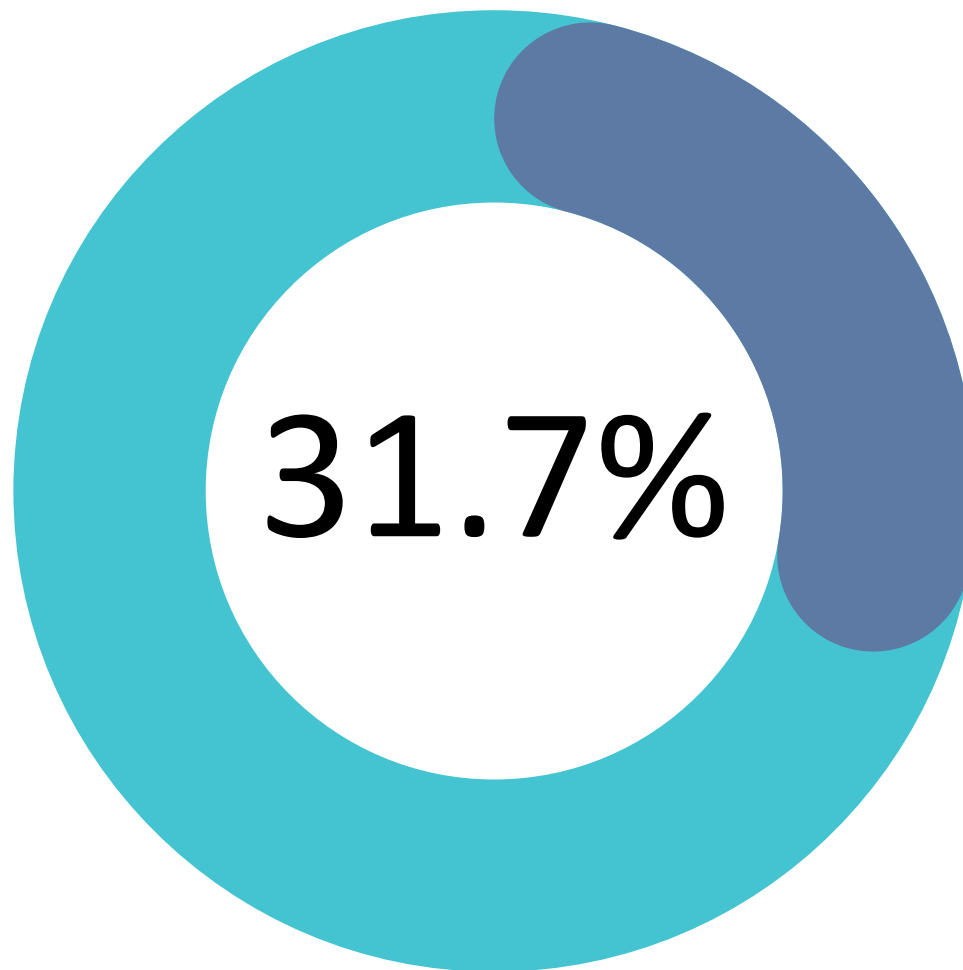
Source: Sung 2021 <https://acsjournals.onlinelibrary.wiley.com/doi/10.3322/caac.21660>



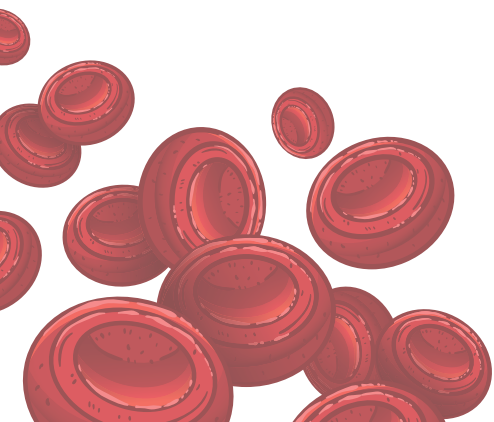
Rapid Insights: Acute Myeloid Leukemia



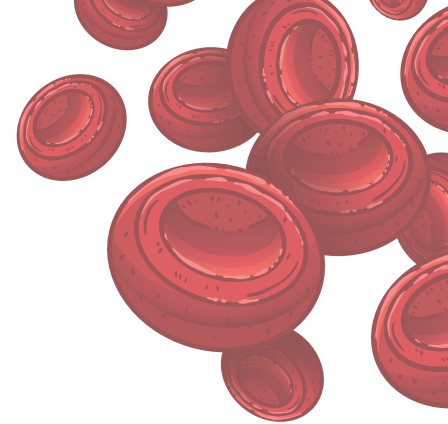
The 5-year relative survival rate for AML is just 31.7%, highlighting the need for additional therapies to improve patient outcomes.



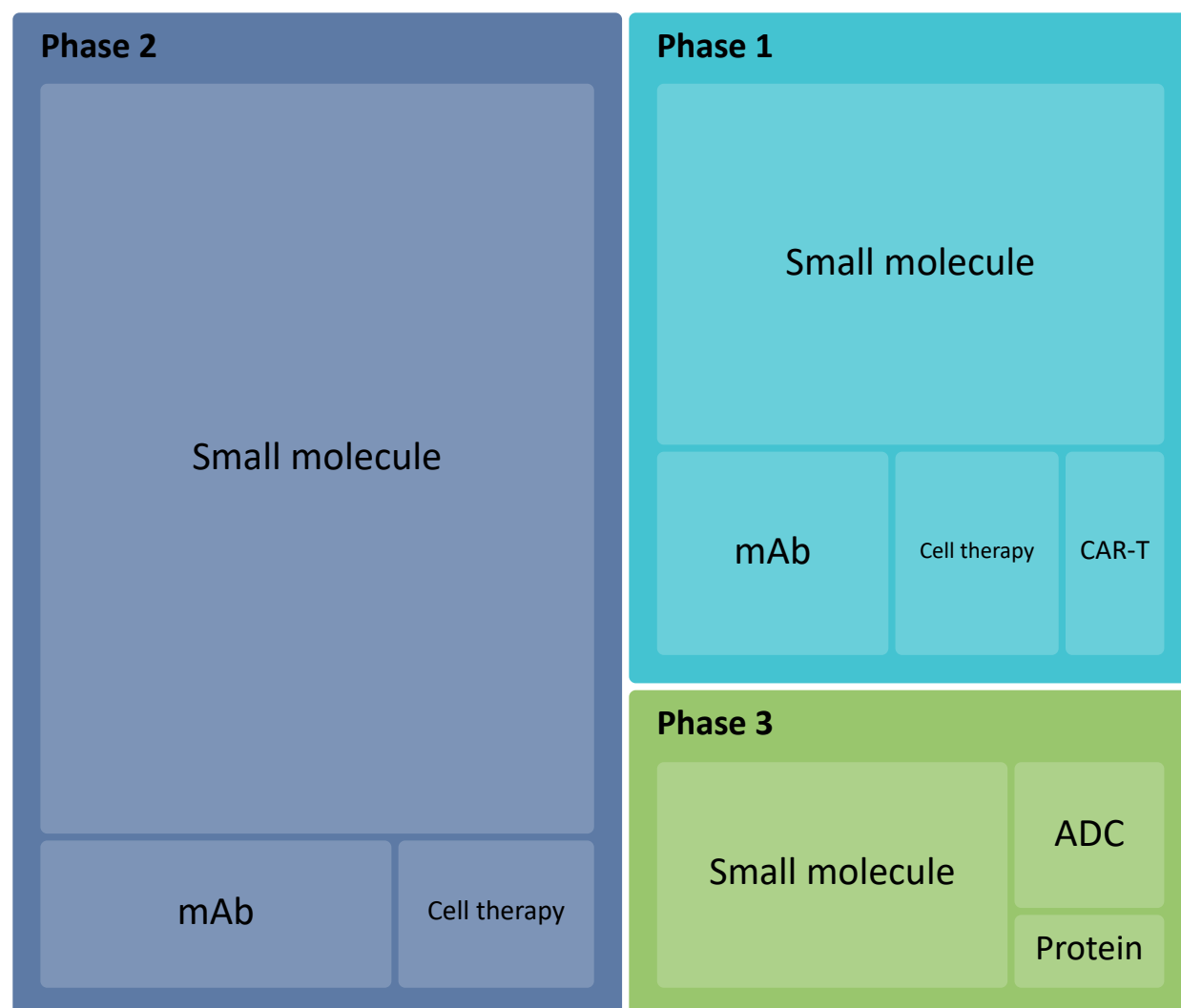
Source: SEER 2023 <https://seer.cancer.gov/statfacts/html/amyl.html>



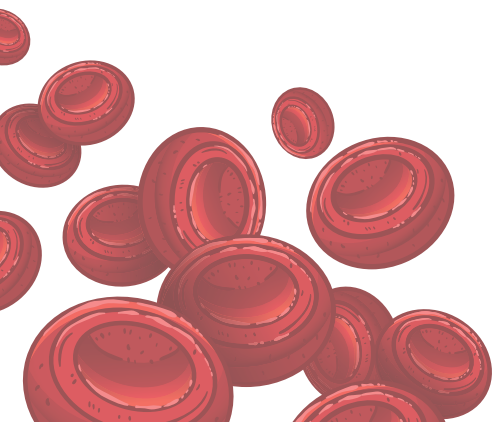
Rapid Insights: Acute Myeloid Leukemia



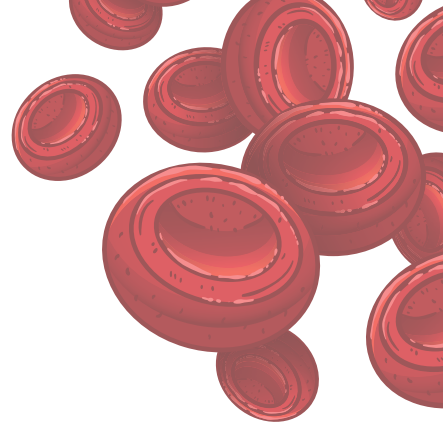
A wide range of treatment modalities: Small molecules are most used in all phases, but mAbs, ADCs, and cell therapies are being investigated as well.



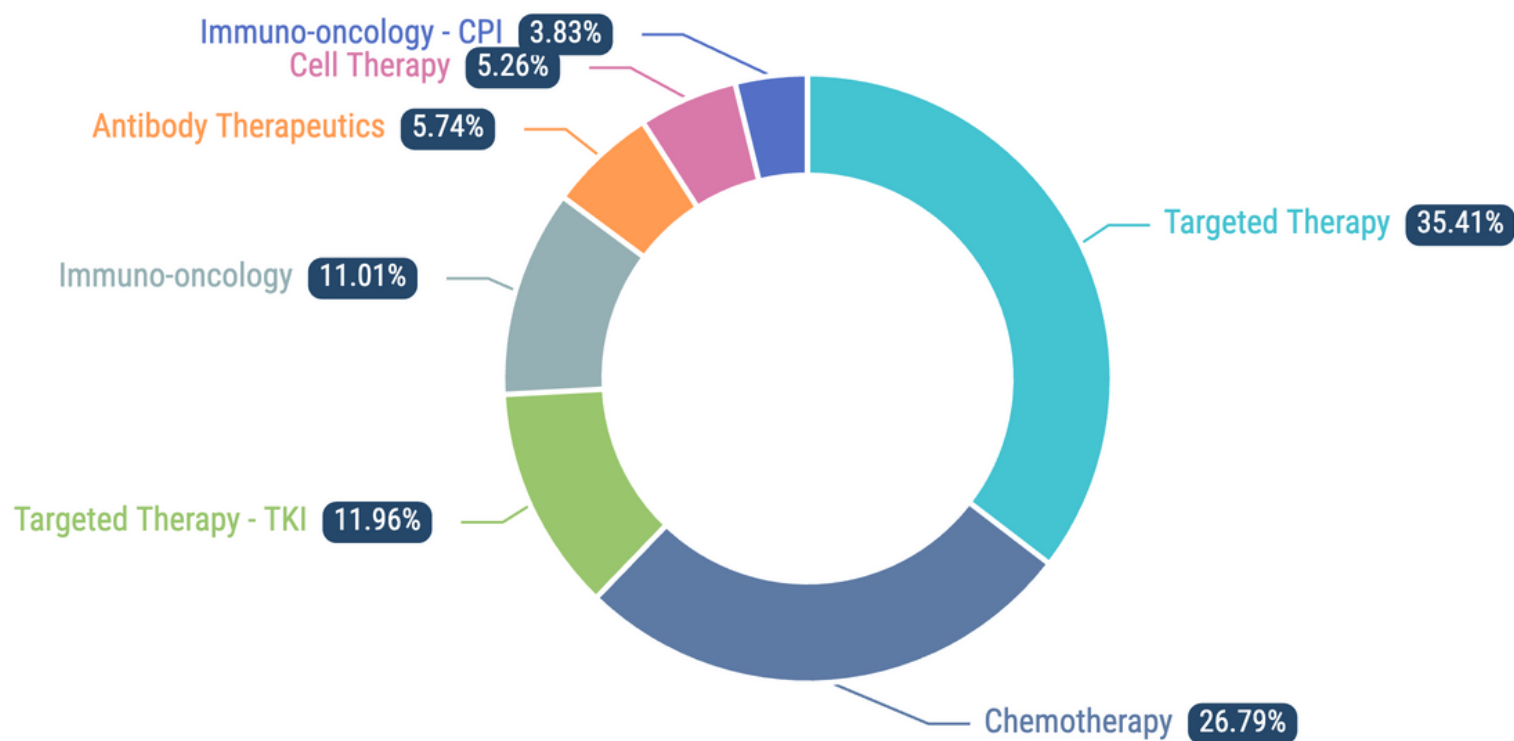
Source: Kognitic



Rapid Insights: Acute Myeloid Leukemia

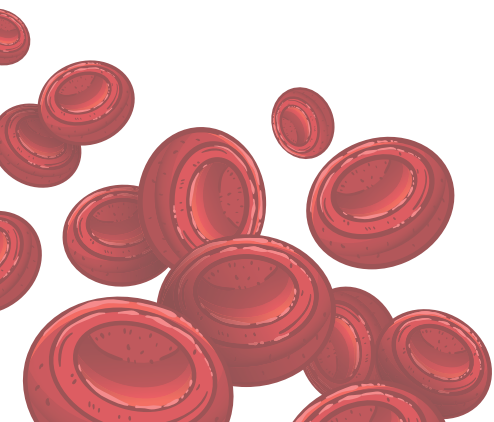


Targeted therapy leads as the primary therapy class in trials presented at ASH 2023, based on the number of trials

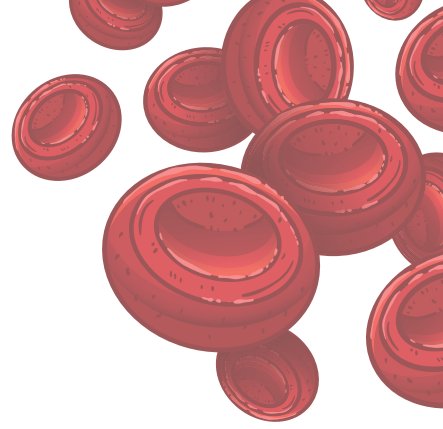


ASH 2023: Distribution by Therapy Class

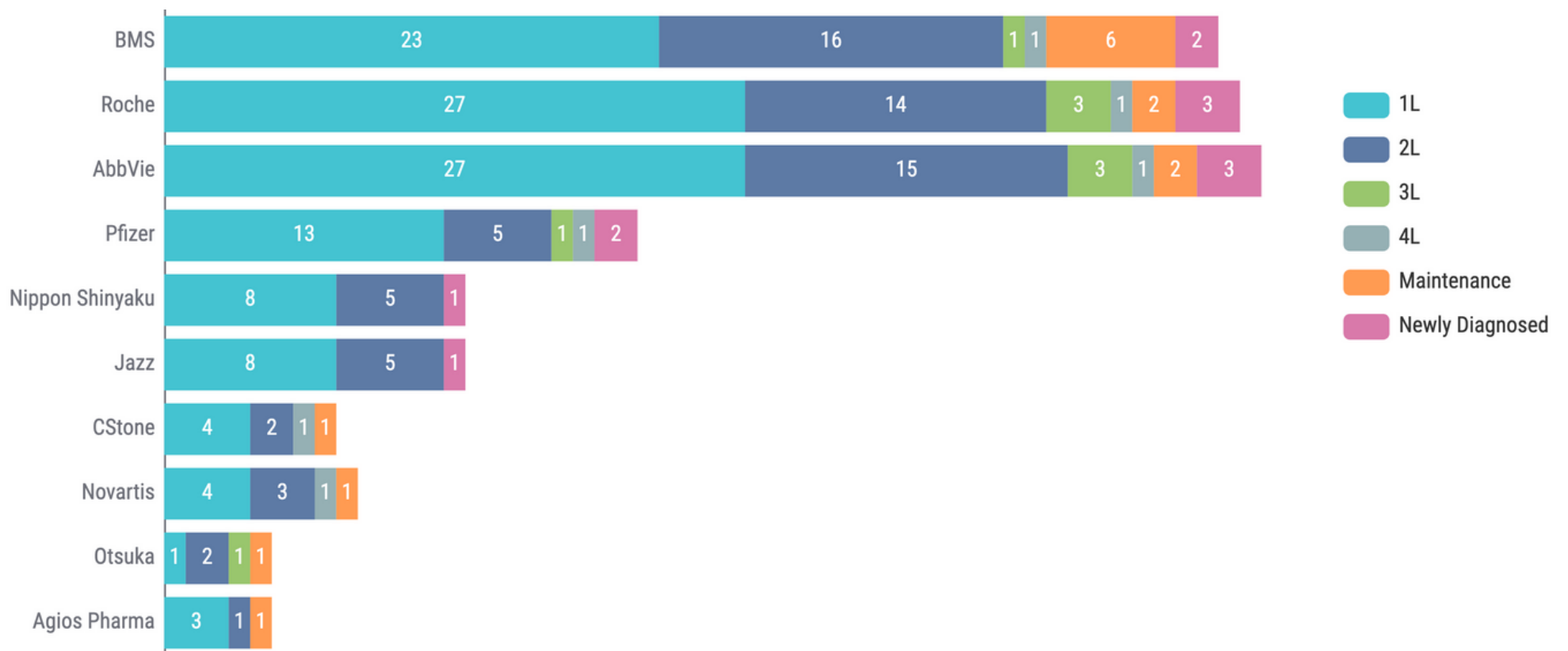
Source: Kognitic



Rapid Insights: Acute Myeloid Leukemia

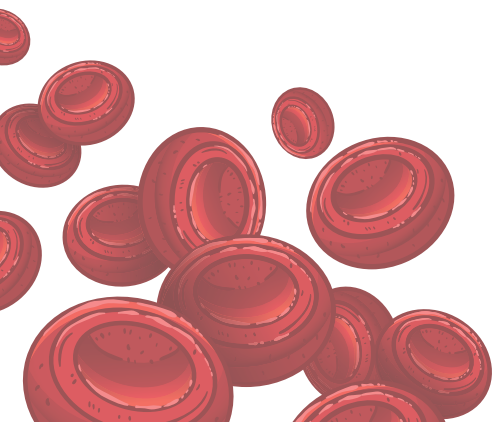


Looking at the top companies in AML (by number of abstracts/trials at ASH 2023), there is a focus on 1L and 2L trials. The full Top 10 can be seen below.

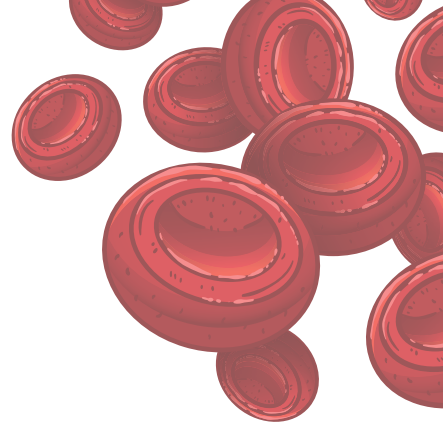


ASH 2023: Trials by Company / Line of Therapy

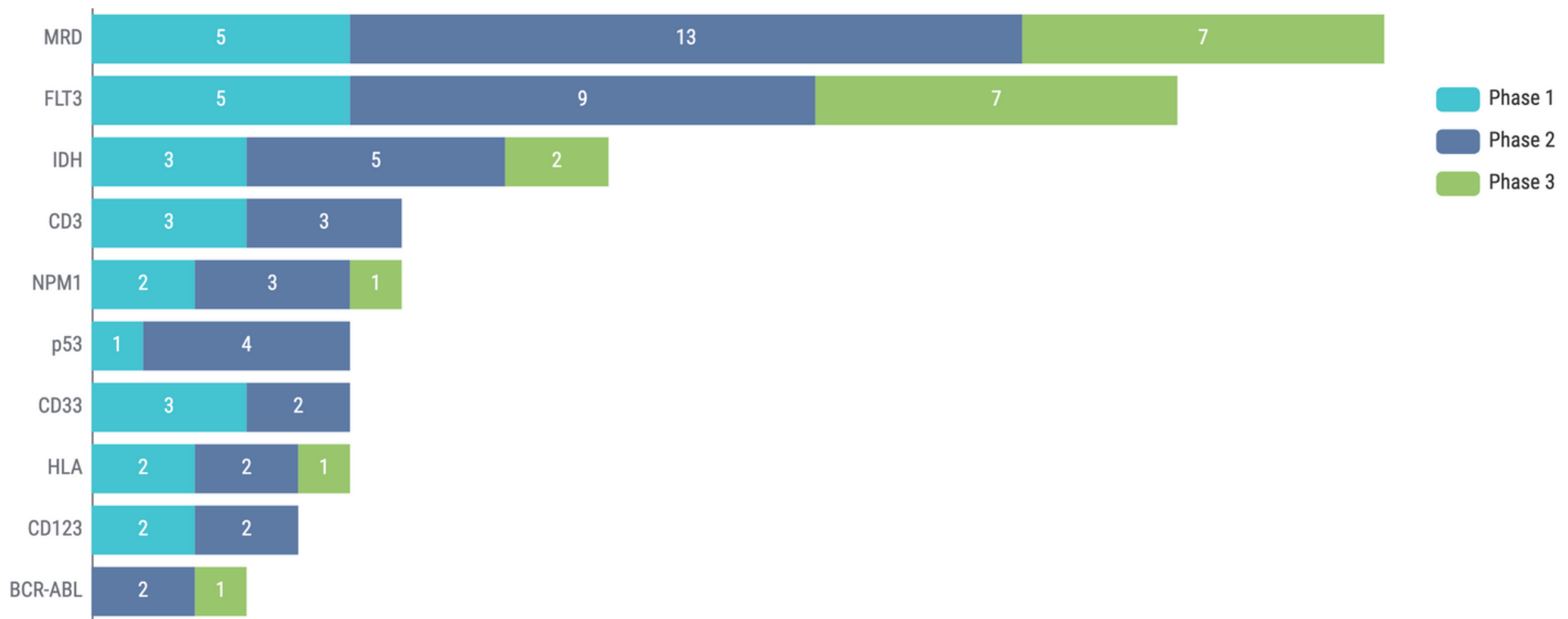
Source: Kognitic



Rapid Insights: Acute Myeloid Leukemia

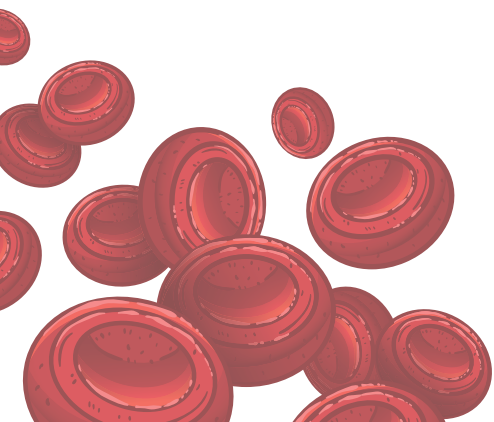


Top biomarkers in the AML space include: MRD, FLT3, IDH, and CD3, among others (full Top 10 below).



ASH 2023: Trials by Biomarker / Phase

Source: Kognitic




Kognitic will be at ASH 2023!

Connect with the Kognitic Team at the ASH 2023 Conference in San Diego, California. We are looking forward to seeing you there!



ASH 2023

Meet the Kognitic Team

 Dec 9-12, 2023
 San Diego, CA



Analicia De Los Angeles
Product Manager



Gayathri Raghupathy
VP, Scientific Affairs and Strategy